

0203 567 1420

info@exevents.co.uk

VIRTUAL TEAM BUILDING



VIRTUAL TEAM BUILDING

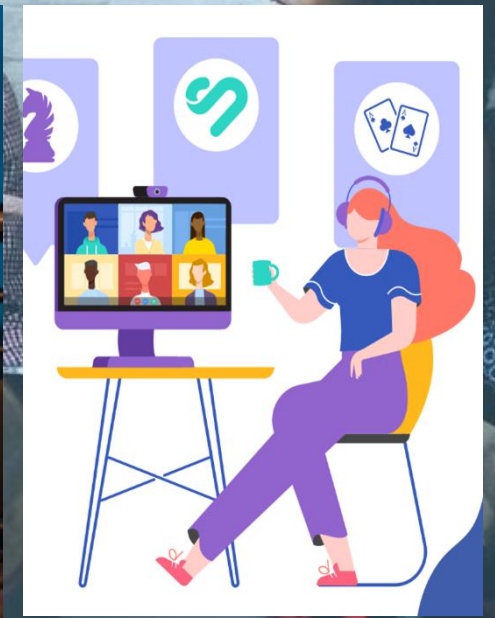
Now is a critical time to ensure that **your team feels valued and bonded**. We offer a series of exceptional online virtual challenges that will bring your teams together despite their remote locations.

Meticulous planning is at the centre of every **successful event** and here at Ex Events, we ensure no detail is overlooked. We are delighted to be able to offer a **comprehensive range** of exceptional **virtual team building** activities.

These are available as stand alone virtual events or can be added to a **virtual conference** or to your **virtual party**. Please choose from the following selection or talk to us about any specific requirements. We're here to help.

Please note that all costs are subject to VAT.

0203 567 1420
info@exevents.co.uk



GLOBAL CHALLENGE – FESTIVE EDITION

Festivals and holidays bring people together all over the world and we think that's worth celebrating! So get your team ready for an uplifting virtual adventure to learn the unique traditions of different nations across the globe!

This fun, engaging challenge will see teams virtually travelling the world to experience the year-round celebrations of different countries, religions and cultures. It's the perfect inclusive adventure for worldwide teams! Using our immersive app, players will complete a variety of trivia tasks and creative challenges via fascinating destinations including Thailand, Spain, South Africa and many more.

Each correct answer will earn teams valuable points but don't forget to keep a look out for bonus challenges too!

You and your fellow adventurers will be up against the clock to score as many points as possible before you run out of time. It's up to you to work together to explore each country, unlocking clues and challenges as you go.

PRICES:

- Set Up Charge: £550.00
- £25.00 per person

DURATION: 60 - 90 minutes

NUMBERS: 25 to 250 guests

REQUIREMENTS:

- A good internet connection
- A smartphone with the ability to download our App (Android or iOS)
- A laptop or device with sound and a camera in order to join a video conference. Our platform of choice is Zoom* which we set up for you using our account details.

ALL PRICES EXCLUDE VAT



VIRTUAL CHRISTMAS BONANZA

Go virtual this festive season with our brand new Christmas Bonanza activity! Packed full of interactive, festive-themed trivia - we'll have you singing Bing Crosby before you know it!

With three rounds to take part in, participants will have to work together to answer a range of fun, festive trivia questions +photo and video challenges .Whether you're re-enacting your favourite festive film or working against the clock to score those extra important bonus points - there really is something for everyone to get involved in. Plus we bring the teams together at various points for some hilarious community challenges!

PRICES:

- Set Up Charge: £550.00
- £25.00 per person

DURATION: 60 - 90 minutes

NUMBERS: 25 to 250 guests

REQUIREMENTS:

- A good internet connection
- A smartphone with the ability to download our App (Android or iOS)
- A laptop or device with sound and a camera in order to join a video conference. Our platform of choice is Zoom* which we set up for you using our account details.

ALL PRICES EXCLUDE VAT



MURDER IN THE ALPS

You and your team are on an exciting skiing trip when things suddenly take a deadly turn. An avalanche hits and in the aftermath, a body has been discovered in the snow...

Using the interactive map, it's up to you and your fellow detectives to scour the chalet for evidence and liaise with the witnesses to discover what happened when the avalanche hit. You'll need to look out for hidden clues and rule out suspects to aid your investigation as you go! Remember, everyone is a suspect as you try to figure out who could have done such a thing!

With the clock ticking and the case on thin ice, you must work together to piece together what happened and uncover the cold-blooded killer before it's too late!

PRICES:

- Set Up Charge: £550.00
- £25.00 per person

DURATION: 60 - 90 minutes

NUMBERS: 25 to 250 guests

REQUIREMENTS:

- A good internet connection
- A smartphone with the ability to download our App (Android or iOS)
- A laptop or device with sound and a camera in order to join a video conference. Our platform of choice is Zoom* which we set up for you using our account details. *The benefits of Zoom is that it allows us to split your group into smaller teams, each in its own breakout room, allowing teams to collaborate.*

ALL PRICES EXCLUDE VAT



ESCAPE THE ARCTIC

Following a tense, scene setting briefing by our remote Event Manager, teams will find themselves in a locked room that they must virtually escape from before the time runs out. Survival instincts will be severely tested as teams must work together to crack the code and identify their location.

Having become separated from their guide deep in the Arctic and with light fading and a severe storm approaching, the teams must abandon their expedition in search of help. Locked in a hut without power, the teams must first find scattered clues to crack the code that will kick start the generator. With power restored they face further challenges to survive, make the call for help to avoid being lost forever.

There are three stages to complete in Escape the Arctic. Teamwork and a clear strategy are required to ensure survival. Participants use their own smartphone devices and video conferencing software to complete the challenge.

PRICES:

- Set Up Charge: £550.00
- £25.00 per person

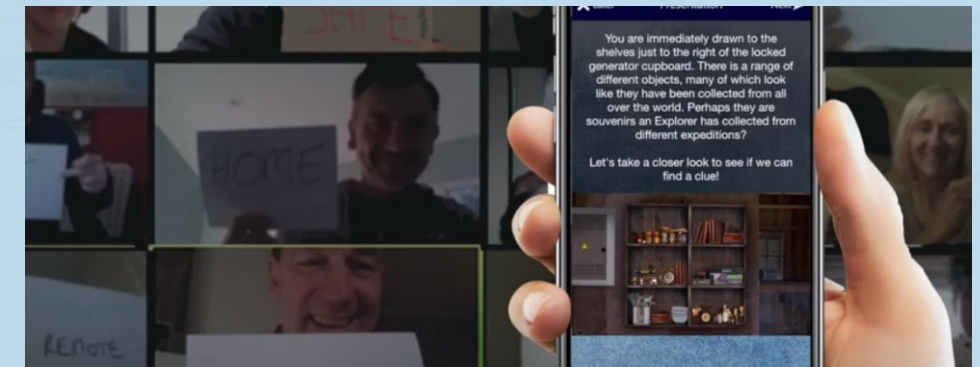
DURATION: 60 - 90 minutes

NUMBERS 25 – 250 guests

REQUIREMENTS:

- A good internet connection
- A smartphone with the ability to download our App (Android or iOS)
- A laptop or device with sound and a camera in order to join a video conference. Our platform of choice is Zoom* which we set up for you using our account details.

ALL PRICES EXCLUDE VAT



ESCAPE ROOM: FRAMED

Following a tense, scene setting briefing by our remote Event Manager, teams will find themselves in a locked room that they must virtually escape from before the time runs out. This is the ultimate set up as teams have been Framed for a crime they didn't commit. Who will believe them?

Having been summoned to the Executive office, you discover you have been locked in and Framed for an elaborate Art Heist while the true culprit walks free. The police are arriving in one hour so time is not on your side. Your freedom is at stake. You must work as a team to crack the code and escape before the police arrive. This highly engaging and experiential team event is designed to put creative problem-solving skills to the test. Remote teams must complete a series of cryptic tasks, riddles and puzzles, with the goal of escaping our virtual room!

Hosted via video conference and using their own smartphone devices, participants will have to unpick evidence, unravel cryptic messages and avoid the curveballs that will be thrown at them along the way!

PRICES:

- Set Up Charge: £550.00
- £25.00 per person

DURATION: 60 - 90 minutes

NUMBERS 25 – 250 guests

REQUIREMENTS:

- A good internet connection
- A smartphone with the ability to download our App (Android or iOS)
- A laptop or device with sound and a camera in order to join a video conference. Our platform of choice is Zoom* which we set up for you using our account details.

ALL PRICES EXCLUDE VAT



MURDER AT THE MANOR

Murder at the Manor is our classic “whodunit” challenge as Cluedo meets CSI. In a highly interactive problem-solving virtual event designed to test your crime-solving skills. Teams must work together to unlock and examine key evidence such as witness statements and suspect interviews. They are also required to use augmented reality to reveal hidden information along the way and explore the crime scene via an interactive map. They must complete tasks and challenges which will help them acquire evidence and assist with the investigation.

Hosted via video conferencing and one of our virtual event managers, points will be awarded for successfully completing observational and trivia questions, as well as fun photo and video tasks, all whilst identifying the weapon, murderer and motive.

PRICES:

- Set Up Charge: £550.00
- £25.00 per person

DURATION: 60 - 90 minutes

NUMBERS: 25 to 250 guests

REQUIREMENTS:

- A good internet connection
- A smartphone with the ability to download our App (Android or iOS)
- A laptop or device with sound and a camera in order to join a video conference. Our platform of choice is Zoom* which we set up for you using our account details. *The benefits of Zoom is that it allows us to split your group into smaller teams, each in its own breakout room, allowing teams to collaborate.*

ALL PRICES EXCLUDE VAT



NETWORKING AWAY DAY

The aim of the game is simple ... Score as many points as possible before you run out of time! Working in virtual teams, you will need to decide upon the best answer to each question to win maximum points. Playing from any location including home, participants will use their own devices to answer questions and complete challenges.

Team strategy is the key to winning this challenge; players must communicate and work with the other remote players in order to progress. All whilst racing against the ticking clock! Starting on square one, teams must work together to complete tasks using their own devices.

As teams work their way through the challenges, they'll progress to the next square. There's a huge variety of content to keep teams engaged and a live scoreboard will keep the momentum going and allow participants to check progress,

The aim of the game is simple; complete as many challenges as possible within the given time to score the highest points and be crowned the winners!

PRICES:

- Set Up Charge: £550.00
- £25.00 per person

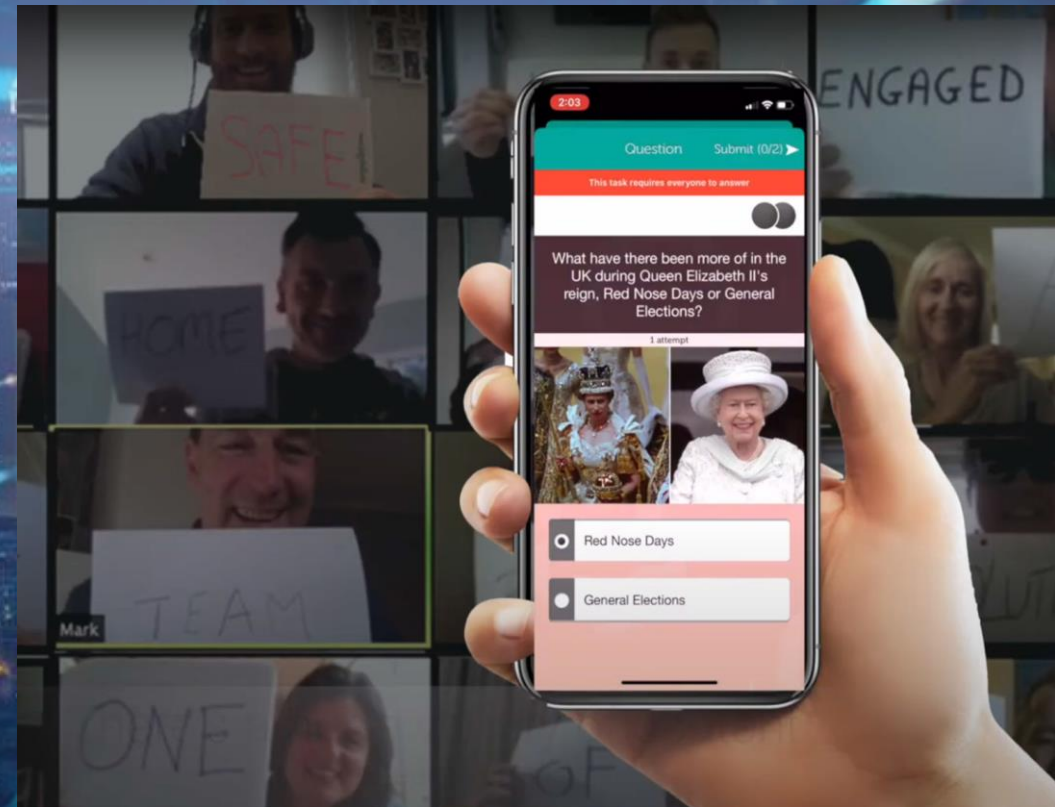
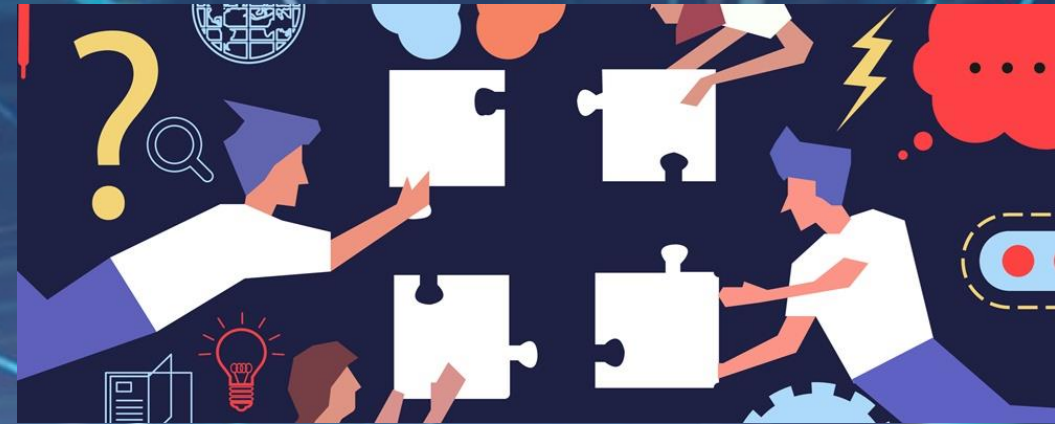
DURATION: 60 - 90 minutes

NUMBERS: 25 to 250 guests

REQUIREMENTS:

- A good internet connection
- A smartphone with the ability to download our App (Android or iOS)
- A laptop or device with sound and a camera in order to join a video conference. Our platform of choice is Zoom* which we set up for you using our account details. The benefits of Zoom is that it allows us to split your group into smaller teams, each in its own breakout room, allowing teams to collaborate.

ALL PRICES EXCLUDE VAT



GLOBAL CHALLENGE

Passports at the ready as you invite your team on a virtual globe-trotting trip around the world, visiting 22 countries across 40,000 virtual miles while putting your teamwork, collaboration and creativity to the test! Teams must earn Travel Credits to fund their journey while answering location specific questions to progress. As they work their way across the interactive map, they will collect boarding passes to help them on their way.

Starting in Argentina, each country contains a series of tasks & challenges to complete before moving to the next destination. With a wide variety of challenges, including demonstrating Kung-Fu skills in China, to exploring well known landmarks on Google Maps to uncover the answers to questions - there's something for everyone! Keep an eye on the clock though - Travel Credits are earned not only through completing tasks, but also for distance travelled too. The team with the most Travel Credits at the end will be crowned the winners!

PRICES:

- Set Up Charge: £550.00
- £25.00 per person

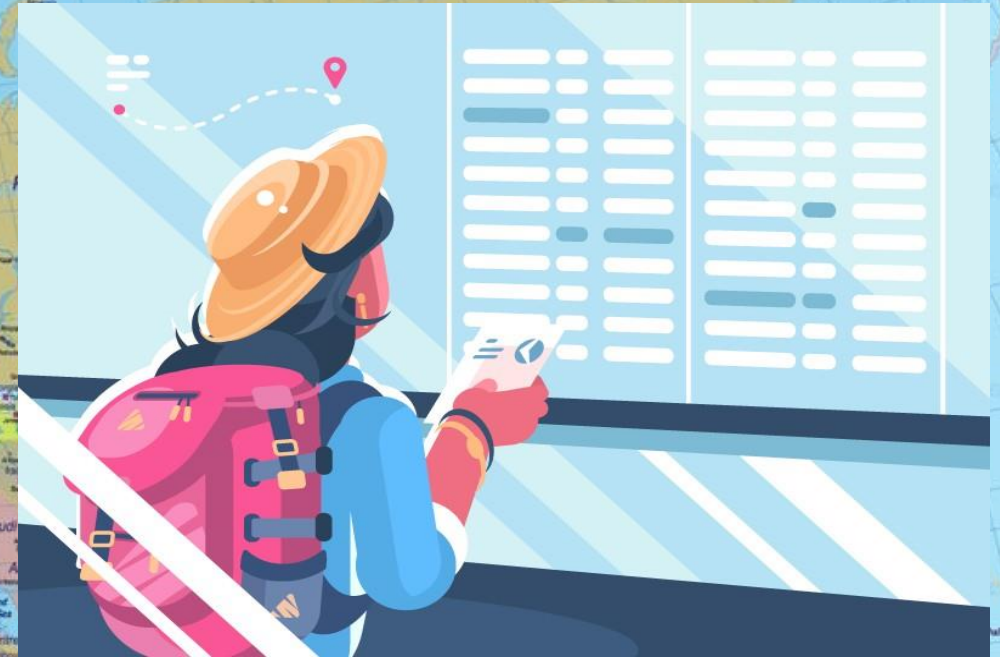
DURATION: 60 - 90 minutes

NUMBERS: 25 to 250 guests

REQUIREMENTS:

- A good internet connection
- A smartphone with the ability to download our App (Android or iOS)
- A laptop or device with sound and a camera in order to join a video conference. Our platform of choice is Zoom* which we set up for you using our account details.

ALL PRICES EXCLUDE VAT



VIRTUAL WREATHMAKING

Hosted by our expert florist in the virtual grotto, guests get Christmas crafting by designing and making their own hand-made festive wreaths. We'll post out kits in advance containing everything needed.

After a demonstration of the traditional florists' wreath making methods, guests get their hands dirty! Guests will be guided through each step while they cover their wreath base with moss before adding winter foliage like scented pine, spruce and berried ivy.

At the end of the activity, guests can present their wreaths and, as an optional competitive element, we can judge a winner! Wreaths can then be proudly hung on the front door, to impress the neighbours, or used as a festive table centre decoration fit for the Christmas dinner table!

PRICES:

£550.00 event set up fee plus £75.00 per head for 30+ participants

DURATION: 1.5 hours

GUEST REQUIREMENTS:

- Access to Zoomplatform
- Access to a space with a surface where guests can look at their device while working on their projects
- Table covering(newspaper or similar) to project work surface

Lead time of 2 weeks is required for this event



IN IT TO WIN IT

Unlike our Virtual Horse Racing, this is a day at the races like you would rarely see with not a horse in sight. Races range from “The Gold Pup” (a 9-yard hurdle dash for young dogs) to a Ski Cross Downhill Classic, participants in this event will be able to enjoy not just the competitive element of the “betting” but the very entertaining races themselves. Typical examples (notwithstanding the above) to be found on the race card include:

- Running With The Flock: a frenzy of wool!
- The Short Track Speed Skate Spectacular
- Who Moved My Cheese?: dramatic Gloucestershire cheese-rolling
- Strongman Sprint: fridge-shifting at speed...
- Trolley Ramp Dash: soaring over cakes whilst sat in a trolley

In short, it's huge amounts of fun and totally safe to boot. Guests are divided into their teams and select a team captain. Virtual funds are provided and the teams must decide where to place their bets for each race before sitting back and enjoying the madness that unfolds in the race. Funds are automatically updated as our host lets teams know how they are all doing. There are 4-6 hilarious races to enjoy as the competitive nature grows as we get closer to the final race and finding out which team are to be crowned the champions.

PRICING:

- 5 teams £1,500.00
- 10 teams £2400.00
- 15 teams £3,200.00
- 20 teams £3,900.00

We recommend a maximum of 8 people per team

DURATION: 60 – 90 minutes (4 – 6 races)

ALL PRICES EXCLUDE VAT



MUSICAL BINGO

Musical mayhem via Zoom.....

Musical Bingo normally lasts up to 2 hours and can have up to 4 different rounds, increasing in complexity. It's similar to regular bingo, but even more fun! You need to identify the song/artist on the card (not the number as you would in 'normal' bingo). There are 50 potential songs per card (so lower than the 99 numbers you have in Bingo), which keeps the games tight and fast-moving.

Guests will be playing in one of 5 teams (not as individuals), with points for correct bingo calls being countered by penalties for incorrect calls! This can make it quite tense & exciting as scores go down as well as up.... but don't worry, you can make it up with bonuses handed out for energy, enthusiasm and singing skills! Suitable for groups from 30-300, everyone is sent bingo cards for each round beforehand with 25 song titles, band names or other themed rounds.

This is an energetic, upbeat, virtual team experience guaranteed to have people laughing, cheering and even singing by the end of the evening!

PRICING:

- Set Up Charge: £350.00
- £15.00 per person

GUEST NUMBERS:

Minimum 30

DURATION:

Up to 2 hours

ALL PRICES EXCLUDE VAT



TEST THE NATION

Zoom quizzes!? Who needs them? Well, that's because you haven't taken part in this one, which brings whole new levels of interaction, excitement and suspense... we can provide a wide variety of quizzes, from fun and slightly easier to serious and difficult for the serious eggheads.

The best for teams are "Test The Nation" style quizzes activity, using a combination of Zoom and quizzing software, viewed by participants on a secondary device (e.g. smartphone): this sees competitors answering a variety of questions in different rounds on anything from unusual animals to content from that day's conference; all served up in a multiple-choice answering format (and very limited time to do so, so forget using Google!).

Your guests will be playing individually but their results go towards a team average – in this way, the teams are pitted against each other to see who will be crowned champions!

PRICING:

- Set Up Charge: £350.00
- £15.00 per person

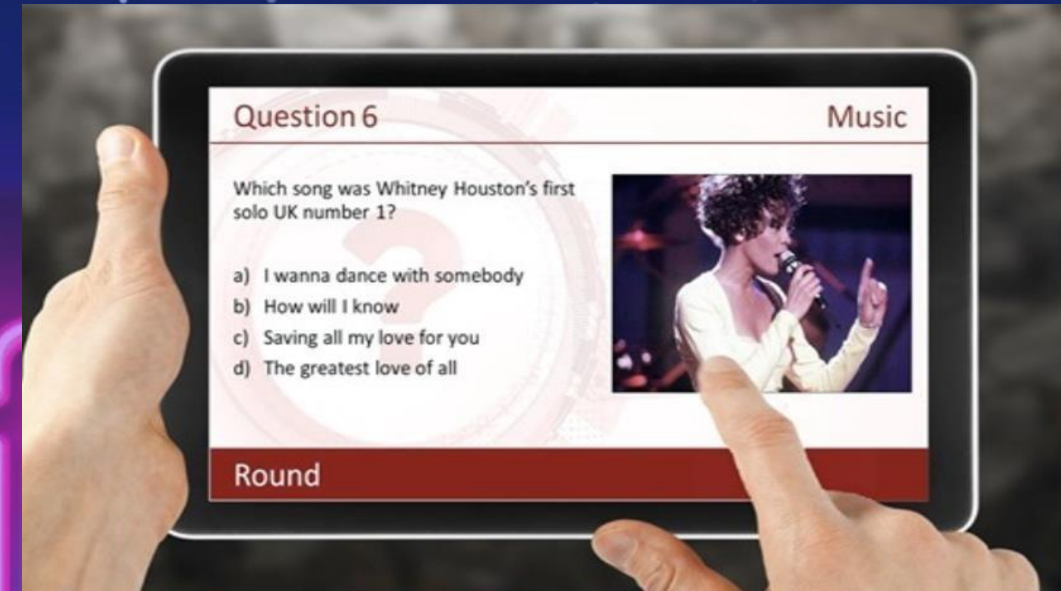
DURATION:

60 to 90 minutes +

NUMBERS:

Minimum 30

ALL PRICES EXCLUDE VAT



A DAY AT THE RACES

Let us entertain you with a day at the races.... Experience the thrill of a flutter on the horses, and hold on tight through an action-packed activity, all in the comfort of your own home. All teams start with the same amount of money and are able to back a maximum of three horses per race. Recent form is provided and the odds presented before the bets are placed. You can then sit back and enjoy the racing, cheering on your horse(s) to the finishing line. Each teams updated cash balance is then revealed before the odds are presented for the next race. The winning team is the one with the most money after all races are completed.

The whole event is hosted by our amazing compere, ensuring that this is a fun and all-inclusive activity for everyone. There will be between 6–8 races hosted over the Zoom platform.

PRICING:

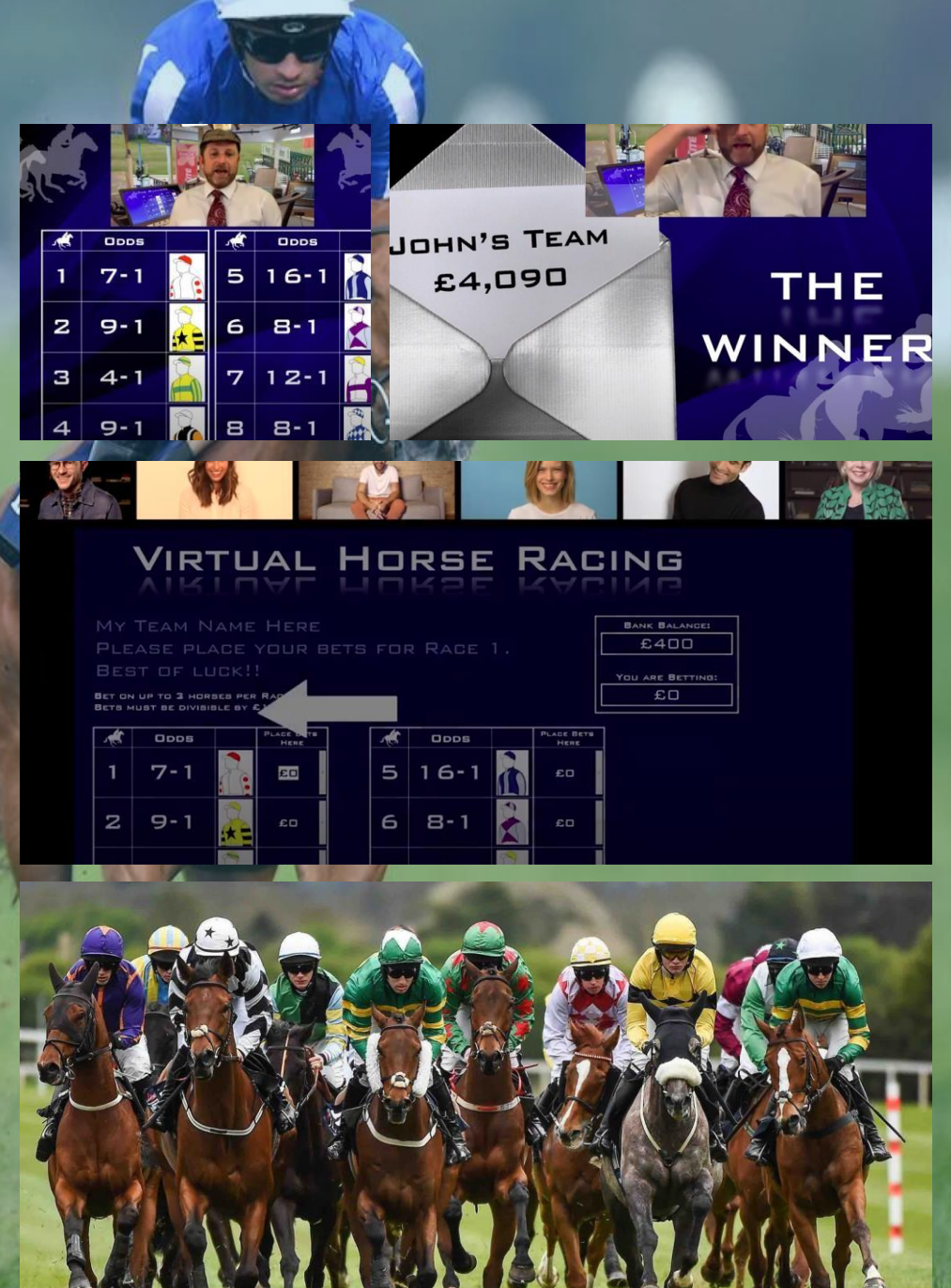
- 5 teams £1,800.00
- 10 teams £2700.00
- 15 teams £3,600.00
- 20 teams £4,500.00
- 25 teams £5,400.00
- 30 teams £6,300.00

We recommend 10 people per team

DURATION: 60 - 90 minutes

NUMBERS: 10 to 300 guests +

ALL PRICES EXCLUDE VAT



MURDER MYSTERY WITH LIVE ACTORS

Using top West End actors and a brilliant script – we offer virtual entertainment that is perfectly suited to any occasion. Most importantly, however – it's really, really funny.

Hosted over Zoom and usually unfolding over 1.5 to 3 hours, your guests will be key witnesses to a brutal murder and must attempt to discover the guilty party. The script is carefully written to be fun, inter-active and perfectly suitable to any audience. Guests are invited to let their inner detective come to the surface and get involved, talk to the actors and try to work out exactly who the murderer is. Endless laughs are assured as our brilliant actors lead your guests through the show. We can stage this with just 4 actors but would recommend the full cast of 6 for maximum effect.

Our unique, entertaining and hilarious performances have been carefully put together to allow guests to take part in their own homes. Your guests would be the key witnesses to a brutal murder and must attempt to discover the guilty party.

PRICE:

- **4 Actors:** £1,790.00, minimum numbers: 5 & maximum numbers: 40
- **5 Actors:** £1,990.00, minimum numbers: 5 & maximum numbers: 70
- **6 Actors:** £2,295.00, minimum numbers: 5 & maximum numbers: 100

DURATION: 1.5 – 3.0 hours (with 50 plus guests we recommend a minimum of 2.0 hours)

NUMBERS: 5 to 100 (POA for numbers in excess of 100)

ALL PRICES EXCLUDE VAT



SHERLOCK: THE BEGINNING

Lord Harrington has been mysteriously murdered at Chapelgate Manor and it's time for a young Sherlock Holmes to begin his illustrious career but he needs your support. You will need to investigate the grand stately home, interact with characters and make the arrest. Move from room to room, solving clues, riddles, puzzles and completing mini-games.

This game is played in teams. All teams will start at the same time and it will be a race for which team can uncover the suspect first. You will nominate a team captain to enter your answers as you complete the challenges.

To set the scene we will have an in-character Host entertaining guests before and after the experience and also support staff (games masters) to provide clues and ensure the event is very slick.

PRICING:

- 15 to 50 guests. £595 set up plus £35.00 per head
- 51 to 100 guests. £595 set up plus £32.00 per head
- 101 to 150 guests. £595 set up plus £29.00 per head
- 151+ guests. £595 set up plus £27.00 per head

DURATION: 60 – 90 minutes

ALL PRICES EXCLUDE VAT



ROGUE AGENT

Saving the world is not always enough as temptation can turn the most honourable of Agents to a world of crime. Seizing the opportunity an MI5 Agent has illegally grown his personal art collection and now the Agency is onto him, but who can be trusted?

As the newest recruits it is down to you to work out who the Rogue Agent is, collate the evidence and identify his location. To assist you on your way you will be granted access to a secret Government portal which you must use to complete the case online.

Using the chosen platform, one of our Event Managers will set the scene with a tense briefing, log you into the sophisticated MI5 dashboard and explain the mission ahead.

PRICING:

- 15 to 50 guests: £595 Set Up Fee, £35 per head
- 51 to 100 guests: £595 Set Up Fee, £32 per head
- 101 to 150 guests: £595 Set Up Fee, £29 per head
- 151 + guests: £595 Set Up Fee, £27 per head

DURATION:

60 to 90 Minutes

NUMBERS:

15 to 500

ALL PRICES EXCLUDE VAT



VIRTUAL GINGERBREAD HOUSEMAKING

Sugar and spice and all things nice...is what this workshop is made up of.

Teams join our flamboyant host in his virtual grotto get festive, creative, and even a little technical by assembling and decorating gingerbread structures!

In advance of the event we'll send out kits containing everything needed for the activity including pre-baked gingerbread "flat packed" slabs, cake boards and royal icing to assemble their structure.

Guests then use royal icing to stick the pieces together and piping nozzles, sweeties, toppings and glitter to make their gingerbread building into an edible winter wonderland!

Guests will be guided through each step and we'll give advice, tips and techniques so that each guest can create something spectacular as well as learning professional icing skills.

At the end of the activity, guests can present their creations and, as an optional competitive element, we can judge a winner and send out a prize in the post.

What is included:

Expert host, green screen virtual shop, posted kit containing all equipment needed including pre-baked gingerbread house kits, cake boards, royal icing and all instructions.

Notes

Cost: £850.00 (event set up fee) + £88.00 per head

Guest Numbers: Minimum of 25

Event Duration: 1– 2 hours

Guest requirements:

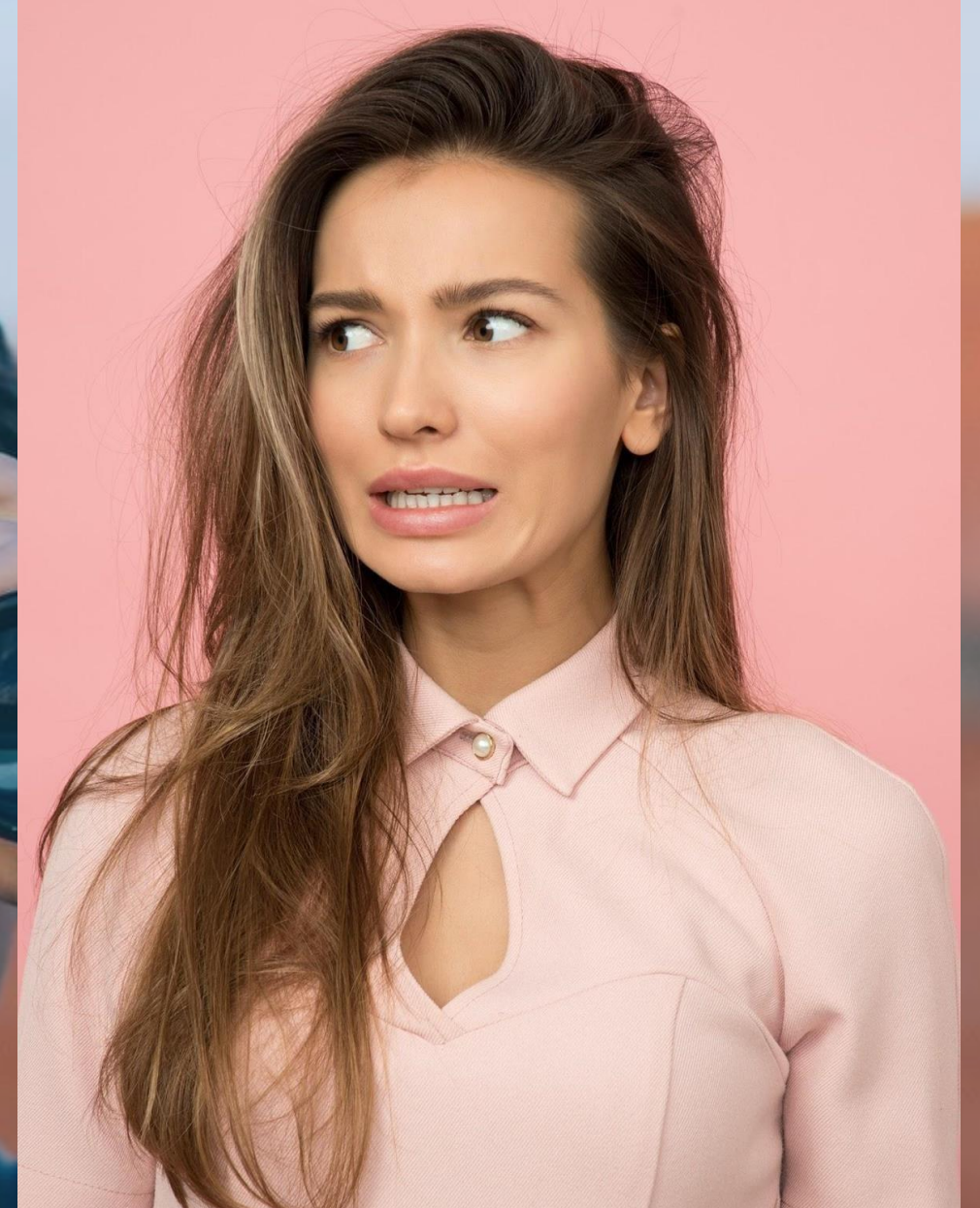
- Access to Zoom platform
- Access to a space with a surface where guests can look at their device while working on their projects



NOT FOUND WHAT YOU'RE LOOKING FOR?

We have some fantastic products, but if these aren't quite what you're looking for **we can source other activities.**

Let's have a conversation. All we need is the details of **your brief, budget, numbers and ideal date**, then we can look into further activities more suitable to your virtual event and **company aims.**



ADDITIONAL VIRTUAL EVENT OFFERINGS

Below is an overview of our additional event offering. **Click the text or images** to be taken to each section on our website.



[VIRTUAL CHRISTMAS](#)



[VIRTUAL AWARDS](#)



[VIRTUAL PRODUCTION](#)



[VIRTUAL CONFERENCES](#)



[VIRTUAL CASE STUDIES](#)

NEXT STEPS

We've done all the talking so far, now it's your turn. Let us know how we can help and ask us any questions you might have on our **Virtual** or **Live Event** solutions.

info@exevents.co.uk

0203 567 1420



@exevents



LIVE EVENT SERVICES

We are also busy running and planning **LIVE** events for Autumn and Christmas 2021 and beyond.

If you are thinking of running a LIVE event get in touch with the experts and let us secure the perfect venue and start planning your next incredible event now.



FULL EVENT MANAGEMENT

Our team of event professionals will work with you to find the perfect venue and ensure a successful and memorable event.



ACCOUNT MANAGEMENT

We manage your venue and event needs, guaranteeing you the highest quality service whilst avoiding mounting costs.



CONFERENCES AND LIVE EVENTS

We work with key decision makers for a variety of employee events and work closely with marketing and communications teams.



SUMMER PARTIES AND VENUES

From the capitals most iconic roof gardens to modern bars and secluded courtyards we have a selection of venues that delight in every way.



COMPANY INCENTIVES AND OFF SITES

For companies looking for an away day or offsite, we can introduce you to some of the most picturesque country hotels and retreats.



LONDON DESTINATION MANAGEMENT

We will provide you with an exceptional range of options to ensure that your stay and event experience is truly memorable.



COMPANY FUN DAYS AND TEAM BUILDING

We can provide suggested venues with external space, a range of activities and entertainment along with organised team building ideas.



CHRISTMAS PARTIES AND VENUES

From fashionable, funky clubs and bars to the sophistication of some of the capitals most exquisite spaces, the choice we offer is extensive.



VENUE EXPERTISE & FREE VENUE FINDING

With our hands-on approach we love nothing more than getting to the core of your brief to find you the perfect corporate venue.